

ITHAKI PROJECT

KATARAS GROUP - METALAXI

WWW.METALAXI.COM



Oriented towards the **Cretan Sea**, the view

the city, the port of Heraklion, the lush green surroundings, the island of Dia, the combination of sea and sky form a dynamic and vibrant landscape that contrasts nature and urbanity.

Located in a quiet, urban family neighborhood, this city retreat is surrounded by a wide variety of amenities, close to a beautiful park and within walking distance to the sea.



"ITHAKI" properties



Airport
Heraklion Airport Kazantzakis International Airport

12 - MINUTE DRIVE



Port
Heraklion Port

9 - MINUTE DRIVE



Super Market

2 - MINUTE WALK



Shopping Malls

2 - MINUTE DRIVE



Restaurants/Cafe

2 - MINUTE DRIVE



Koules Fortress
The Venetian fortress of Rocca a Mare

9 - MINUTE DRIVE



Private Hospital / Hospital

6 - MINUTE DRIVE



Nearest Beach

3 - MINUTE DRIVE



"ITHAKI" properties

New Project | Coming Soon Heraklion, Crete



New Marina
Heraklion Crete
1 - MINUTE WALK

The surrounding area is being upgraded, as the new Marina of the city will be located across the luxury properties of the "ITHAKI" project. The new Marina is designed to cater the mooring needs of mega & super yachts. It will include sports facilities, shopping centers, restaurants, entertainment centers, cultural buildings, urban green spaces and transportation facilities.





block A

ΙΣΟΓΕΙΟ



block B

ΙΣΟΓΕΙΟ



block A

1ος όροφος



block B

1ος όροφος



block A

2ος όροφος



block B

2ος όροφος



block A

3ος όροφος



block B

3ος όροφος



block A

4ος όροφος



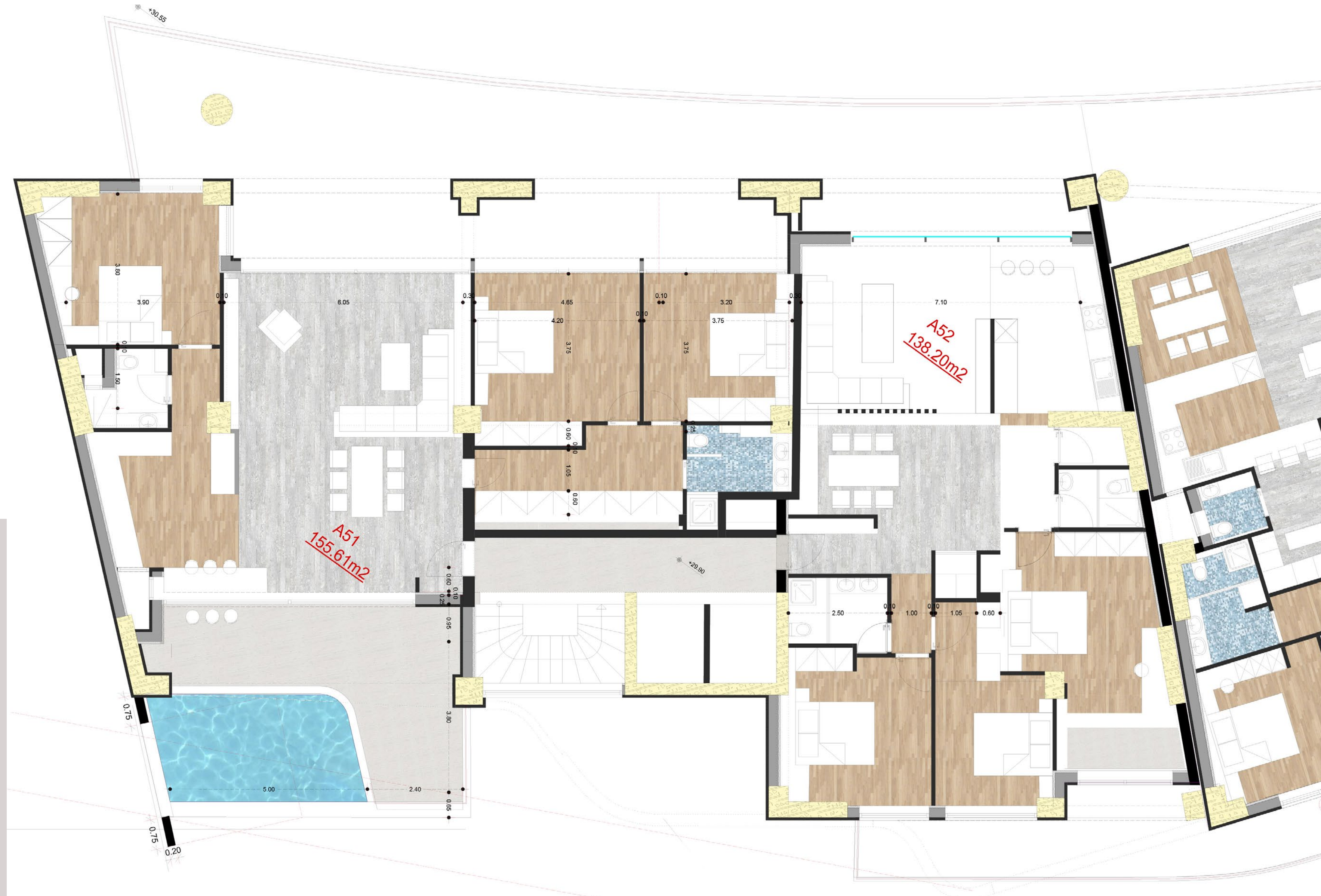
block B

4ος όροφος



block A

Σοφοδό Σος



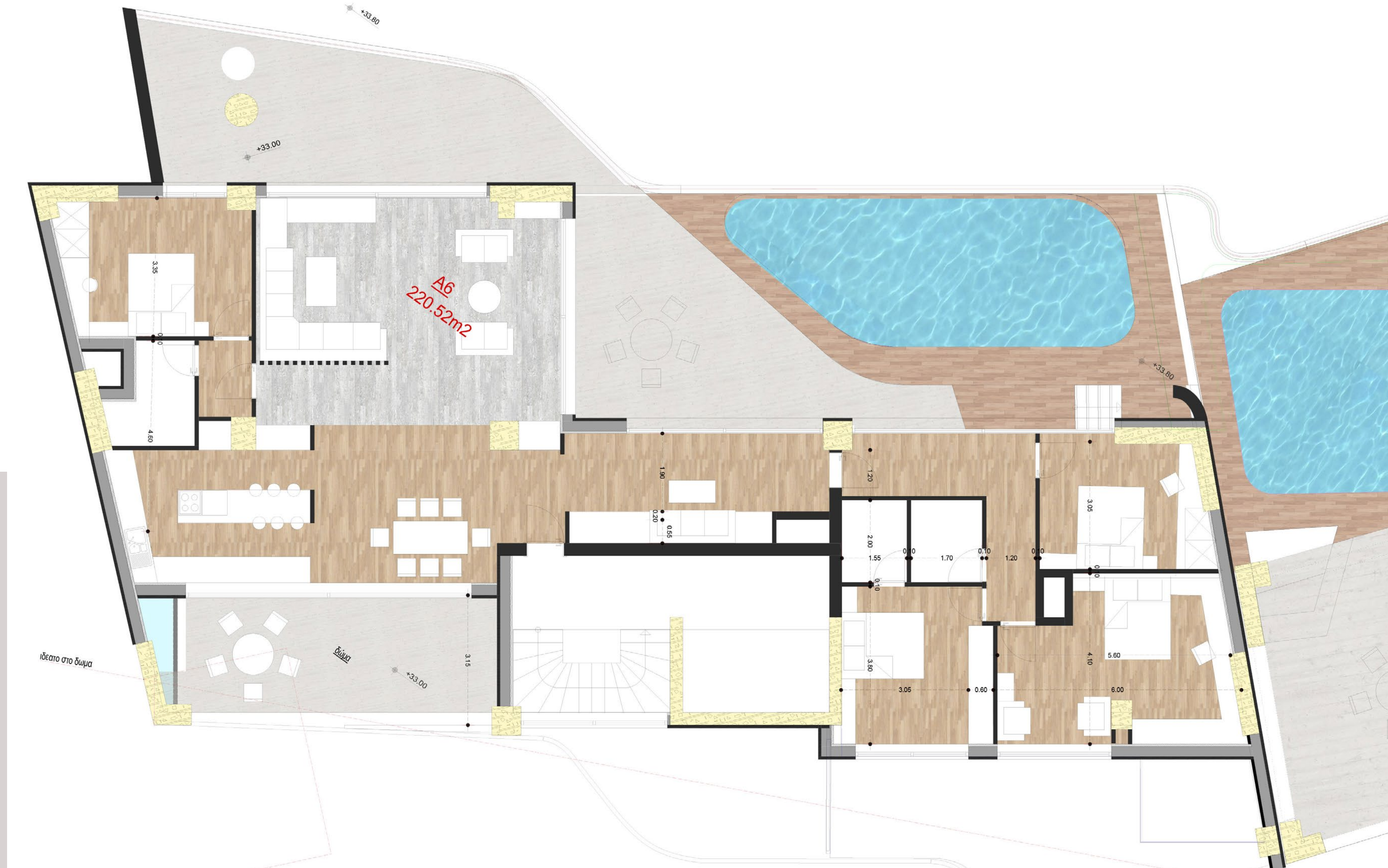
block B

5ος όροφος



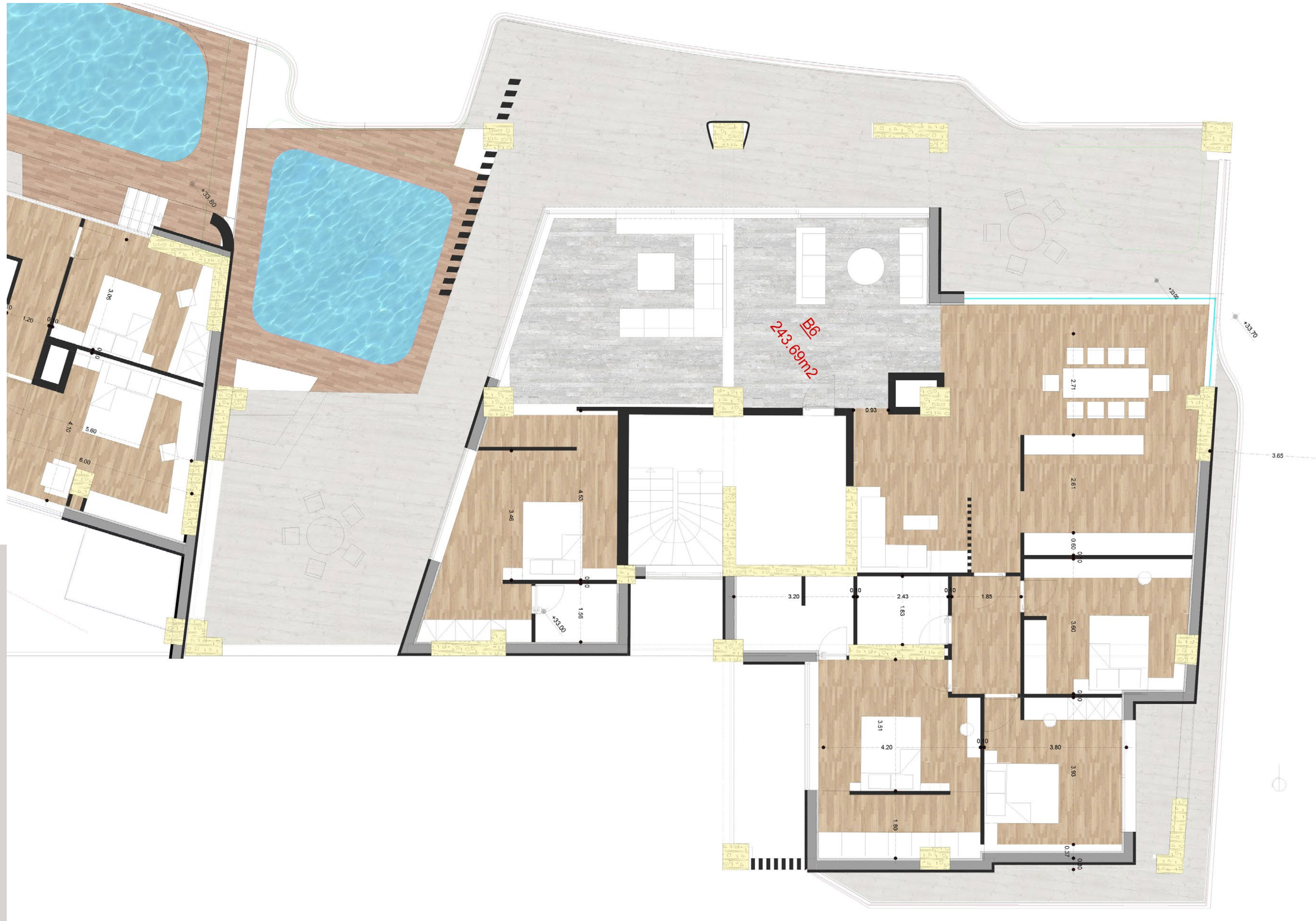
block A

Σοφοδόρ Σοφ



block B

Σοφοδό Σοφ





📍 "ITHAKI" PROJECT

Luxury. Location & Convenience





"ITHAKI" properties



"ITHAKI" properties



EXCEPTIONAL STYLE


~~~~~  
imagine ◦ create ◦ live

y o u r d r e a m   your happiness   your life